



Advanced Window Corp.

Vinyl Windows & Doors



*See the world in a
better light...*

6300 SERIES WINDOWS AND DOORS

6300 SERIES

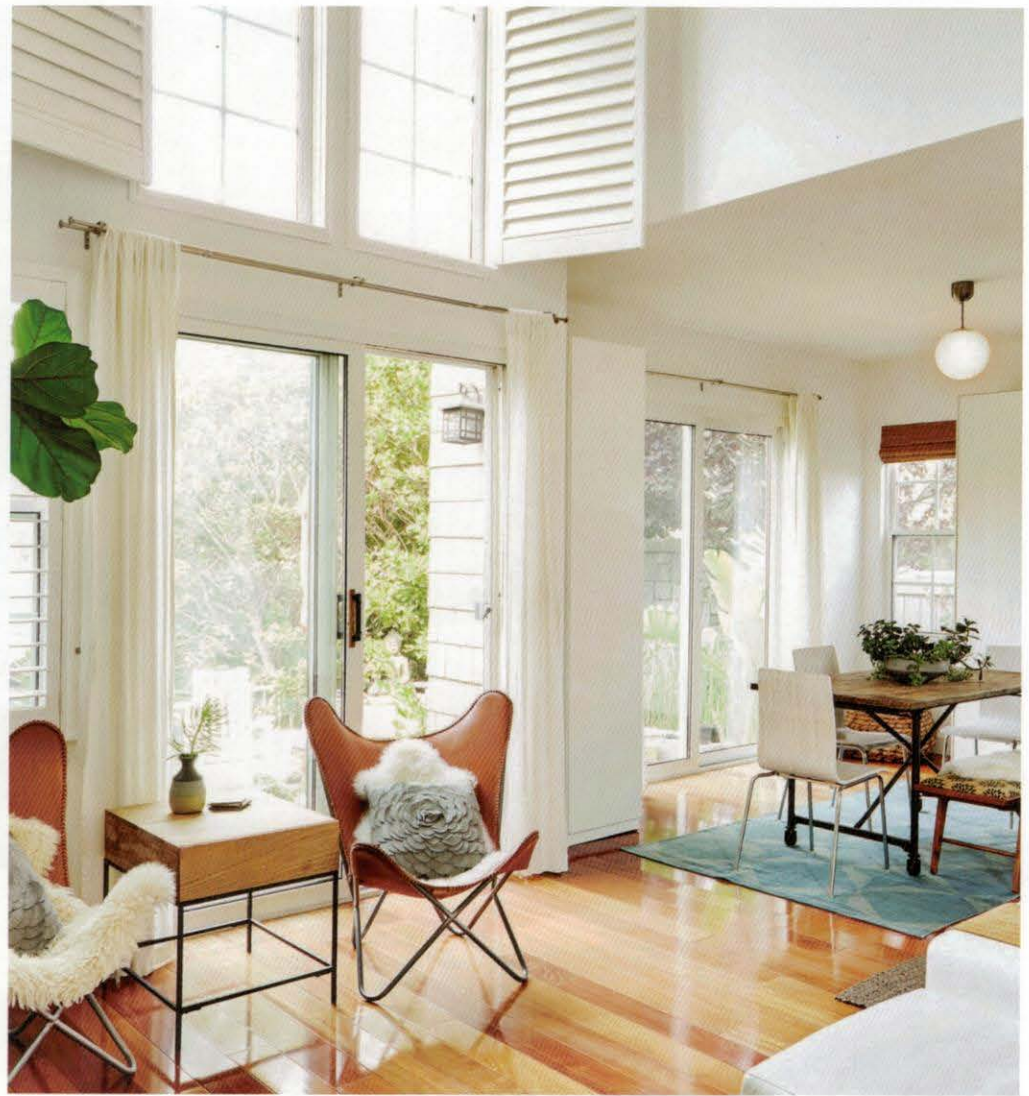
The engineering team has created a window and door series that connects beauty with top efficiency, strength and durability. Innovative, state of the art design tools and rigorous testing programs were the essence of this window and door series.

All of the 6300 Series products are NFRC (National Fenestration Rating Council) rated. Every window and door passed aggressive structural tests under AAMA (American Architectural Manufacturers Association) rules.

The 6300 Series is specially engineered for superior energy efficiency, going beyond current Energy Star requirements, so that you can experience greater comfort in your home. With the 6300 Series, you will feel the difference, and enjoy the lower energy bills.

Perfectly suitable for renovation or new construction, the colonial style of the design offers an elegant appearance, enhances the luxurious feel and supplements the highest design trends.

Products are available in a variety of color options. From solid white or tan, laminated with solid colors or wood patterned films, to unlimited color options with factory applied "Art-Wood" Eco-friendly water based paint. The profiles are made of 100% recyclable virgin vinyl material, designed to withstand the harshest weather conditions without any extra care..The large number of internal walls inside of each frame and sash profile enhances thermal, structural and acoustical performances; following with stronger, fully welded joints. A specifically located larger chamber allows for the use of galvanized steel reinforcements, without creating cold bridges. The reinforcements increase the profile rigidity, allowing for a more strict structural performance.



The 3-1/4" window frame profile features a mullion groove design, allowing for easy frame to frame connections, and for the use of various accessory profiles needed for specific installation types.

All of the 6300 products are available with a huge selection of optimized glazing options, Low-E's and gas fill types, warm edge spacer systems like UltraSpacer and SuperSpacer, Neat coating on external glass surface for easier maintenance, decorative grids and internal blinds if size permits..

Specifically designed and engineered mulling allows for structurally needed multi-window connections.

6300 series products are custom made to ensure the product is a perfect fit for all of the client's needs. They are elegant, economical, and easy to install; making it an easy choice for any project.

The 6300 Series consists of:

Double-Hung or Oriel Windows

Fixed Windows

2 or 3 lite Slider Windows

Casement and Awning Windows

Large Frame Fixed Window

Sliding Patio Doors with available Transom and Side Lite

Architectural shapes

Bay and Bow windows



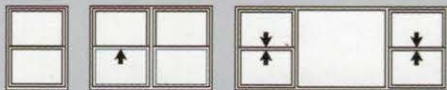


DOUBLE HUNG

If your needs include Double Hung windows, we offer the quality built 6300 series. It exceeds the newest Energy Star requirements.

6300 Double Hung window offers the following options:

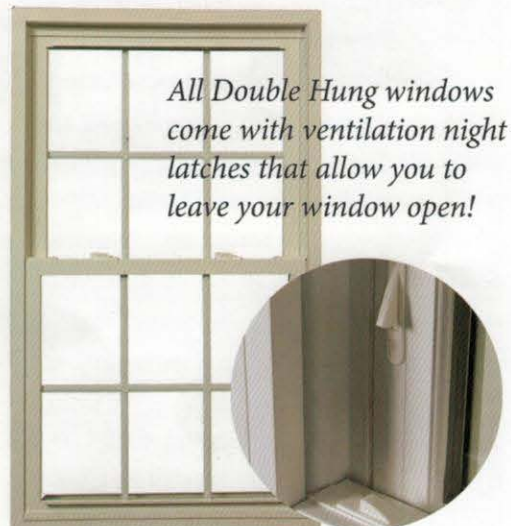
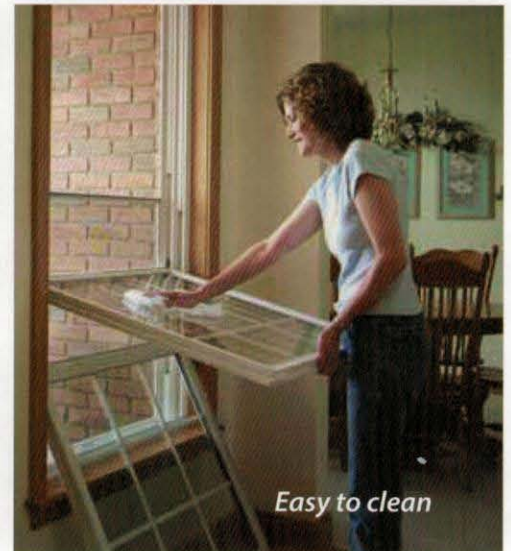
- Solid white or tan colors
- Unlimited color options painted with Eco-friendly water based paints
- Available laminated options in solid colors or woodgrain patterns inside and outside
- Assortment of "Art-Wood" finishes
- Multiple Low-E and gas fill options
- Decorative internal grid systems
- Oriel windows with custom split
- Accessory profiles like: couplers, brick moldings, & nail fin
- Full screen, aluminum or pet resistant mesh
- Different hardware options



Additional configurations available.

The 6300 Double Hung window offers the following standard features:

- 3-1/4" frame depth with mullion grooves
- Full sloped sill
- Meeting rail profiles with integrated interlock system, reducing air infiltration and increasing security
- High density internal wall design to increase thermal, structural, and acoustical performances
- Excellent strength of fully welded joint connection of frame and sash
- Both top and bottom sashes operable
- Tilt-in option for easy cleaning
- Night latches for secure venting
- Zinc die casted cam locks and keepers
- Double or triple optimized insulated glass units (double glazed u-value as low as 0.23, triple glazed u-value as low as 0.19)
- Optional galvanized steel reinforcements for both of the sash meeting rails, vertical stiles and Frame-Sill profile encapsulated with insulating internal chambers
- Externally glazed to reduce air or water leakage
- Triple gasket system to seal sash members and frame against each other
- Extruded aluminum frame half screen with fiberglass mesh
- Custom sizes



SLIDER WINDOW

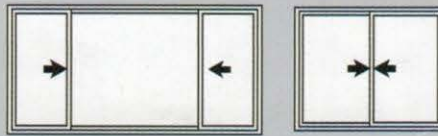
6300 Slider Window: the optimal option for wider openings. They can be made with 2 or 3 sashes, depending on the window width and height. It's oversized frame and sash profiles with optional galvanized steel reinforcements allow larger openings to be glazed without sacrificing the thermal performance. Often enough, it is a more economical way to enhance the home. The 6300 Slider window's thermal values exceed the newest Energy Star standards.

The standard window can be enhanced with the following options and features:

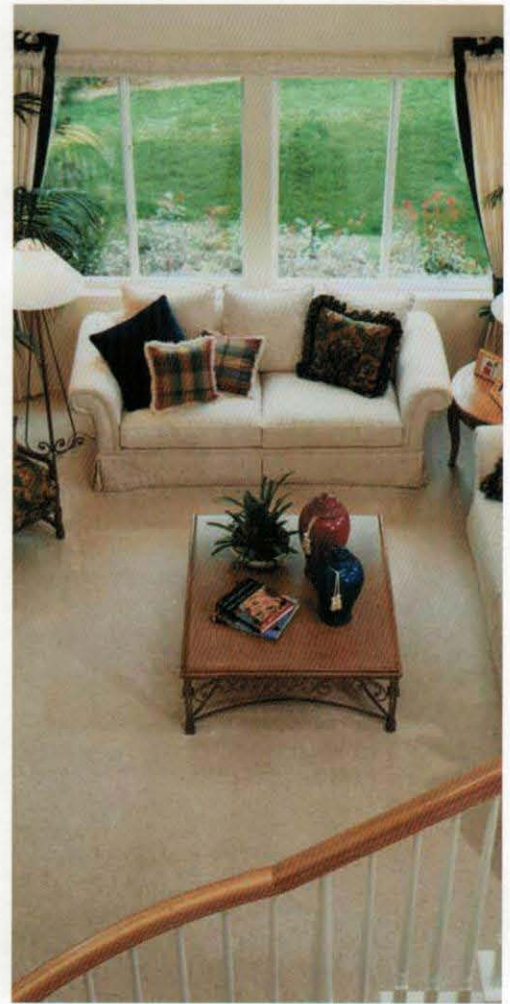
- Solid white or tan colors
- Unlimited color options painted with Eco-friendly water based paints
- Assortment of "Art-Wood" finishes
- Multiple Low-E and gas fill options
- Decorative internal grid systems
- Accessory profiles like: couplers, brick moldings, nail fin
- Full screen, aluminum or pet resistant mesh
- Different hardware styles and finishes

The standard features are:

- 3-1/4" frame depth with mullion grooves
- Meeting rail profiles with integrated interlock system, reducing air infiltration and increasing security
- High density internal wall design to increase thermal, structural, and acoustical performances
- Excellent strength of fully welded joint connection of frame and sash
- Lift option for sash removal
- Both sashes operable
- Anti-lift insert for increased security
- Night latches for secure venting
- Zinc die casted cam locks and keepers
- Double rollers for easy sash movements
- Double or triple optimized insulated glass units (double glazed u-value as low as 0.23, triple glazed u-value as low as 0.20)
- Optional galvanized steel reinforcements for both of the sash meeting rails encapsulated with insulating internal chambers
- Externally glazed to reduce air or water leakage
- Extruded aluminum frame half screen with fiberglass mesh
- Custom sizes



Configurations available.



FIXED OR FIXED LARGE FRAME WINDOWS

The 6300 Fixed window is the perfect match for the 6300 Double Hung or Slider windows. 6300 Fixed Large Frame windows enhance the 6300 Casement and Awning windows. All 6300 Fixed windows exceed Energy Star standards.

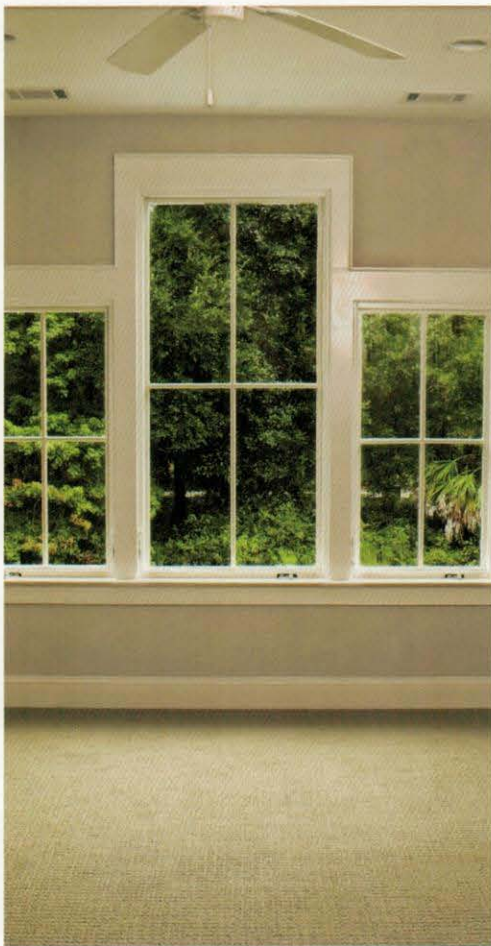
The fixed windows offer the following features:

- 3-1/4" frame depth with mullion grooves
- High density internal wall design to increase thermal, structural, and acoustical performances
- Excellent strength of fully welded joint connection of frame
- Direct inside glazing for easy access and increased security
- Double or triple optimized insulated glass units (double glazed u-value as low as 0.22, triple glazed u-value as low as 0.15)
- Custom sizes

They are available with these options:

- Solid white or tan colors
- Unlimited color options painted with Eco-friendly water based paints
- Available laminated options in solid colors or woodgrain patterns inside and/or outside
- Assortment of "Art-Wood" finishes
- Multiple Low-E and gas fill options
- Decorative internal or external grid systems
- Accessory profiles like: couplers, brick moldings, & nail fin





CASEMENT AND AWNING WINDOWS

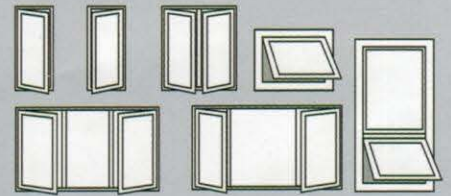
Casement and Awning windows can give you the look you want with the ventilation options you need. Cleaning the outside is easy! Our Casement windows include a “wash-ability” hinge designed to completely offset the window and frame when fully open. In connection with the 6300 Fixed Large Frame window, they offer multi glazing options. 6300 Casement and Awning windows outperform the newest Energy Star ratings.

The options are:

- Solid white or tan colors
- Unlimited color options painted with Eco-friendly water based paints
- Available laminated options in solid colors or woodgrain patterns inside and or outside
- Assortment of “Art-Wood” finishes
- Multiple Low-E and gas fill options
- Decorative internal or external grid systems
- Accessory profiles like: couplers, brick moldings, nail fin
- Egress hinges for wider opening in Casement windows
- Different hardware finish options
- Aluminum or pet resistant screen mesh

All Casement and Awning windows include the following features:

- 3-1/4” frame depth with mullion grooves
- High density internal wall design to increase thermal, structural, and acoustical performances
- Excellent strength of fully welded joint connection of frame and sash
- 2 rows of continuous rubber compression seals with an additional pile weather seal
- Optional galvanized steel reinforcements for the sash rails encapsulated with insulating internal chambers
- Double or triple optimized insulated glass units (double glazed u-value as low as 0.22, triple glazed u-value as low as 0.16)
- Internally glazed for easy access and increased security
- Roto’s Fold-Away Handle
- Roto’s Pro-Drive Multi-Point Locking Hardware System with compression adjustability
- Roto’s Pro-Drive concealed heavy duty hinges
- Roto’s X-Drive operators
- Extruded aluminum screen frame with low visible fiberglass mesh
- Custom sizes



Additional configurations available.



SLIDING PATIO DOOR, PATIO DOOR FIXED UNITS (Transom and Side Panel)

The 6300 Series Sliding Patio Door is a great addition to any room. They provide large amounts of natural light, especially in areas with limited space. With the most modernly engineered design, our doors are weather resistant, strong, durable and secure. They are able to enhance the look of any estate with its functional and elegant look. When choosing our meticulously designed doors for your home, you'll feel confident in your choice, knowing that they will last you a lifetime. 6300 Sliding Door units exceed the newest Energy Star ratings. The Patio Door, if in combination with available side panels or transom, is reinforced with structural steel, allowing for the glazing of large openings. That's our promise to you.

The standard features are:

- 4-7/8" frame depth with mullion grooves and integrated nailing fin for optional new construction installation
- 3 standard width sizes: 5', 6' and 8'; all with 6'-8" height
- Custom sizes available
- Single sash operable, left or right handed
- High density internal wall design to increase thermal, structural, and acoustical performances
- Meeting rail profiles with integrated interlock system, reducing air infiltration
- Excellent strength of fully welded joint connection of frame and sash
- Equal lite
- Lift option for sash removal
- Anti-lift insert for increased security
- Anodized aluminum threshold with Q-LON gasket
- Anodized screen track
- Stainless steel sash roller track
- Double tandem concealed steel rollers, adjustable, with steel bearing
- 2-point mortise lock with narrow line
- Intuition Handle with semi-automatic closure and opening function
- Keyed outside metal pull handle, powder coated

- Secondary, 2 position Foot Lock for increased security and controlled ventilation
- Lockable extruded aluminum screen for durability with fiberglass screen mesh
- Internally glazed for increased security, double or triple glass options (on door: double glazed u-value as low as 0.23, triple glazed u-value as low as 0.18, on fixed unit: double glazed u-value as low as 0.22, triple glazed u-value as low as 0.16)
- Galvanized steel reinforcements for both, sash and fixed mullion encapsulated with insulating interior chambers

Sliding Door can be enhanced with the following options and features:

- Solid white or tan colors
- Unlimited color options painted with Eco-friendly water based paints
- Assortment of "Art-Wood" finishes
- Powder coated color choices and metallic finishes for Handle options
- 4-point locking mortise lock
- Multiple Low-E and gas fill options
- Decorative internal or external grid
- Accessory profiles like: couplers, brick moldings, nail fin
- Aluminum or "Pet resistant" screen mesh.



BAY & BOW WINDOWS

6300 Bay and Bow windows are constructed with a choice of 6300 series products like Double Hung, Casement or Picture windows. The windows are carefully assembled together with externally graded 1-1/4" engineered plywood as jambs, head and seat boards. The external accessory profiles allow for multiple angle connections, optional seat board insulation and protection of the wooden edges from the environmental elements. Choose the combination that will deliver exactly what your application requires.

All Bay & Bow windows include the following features:

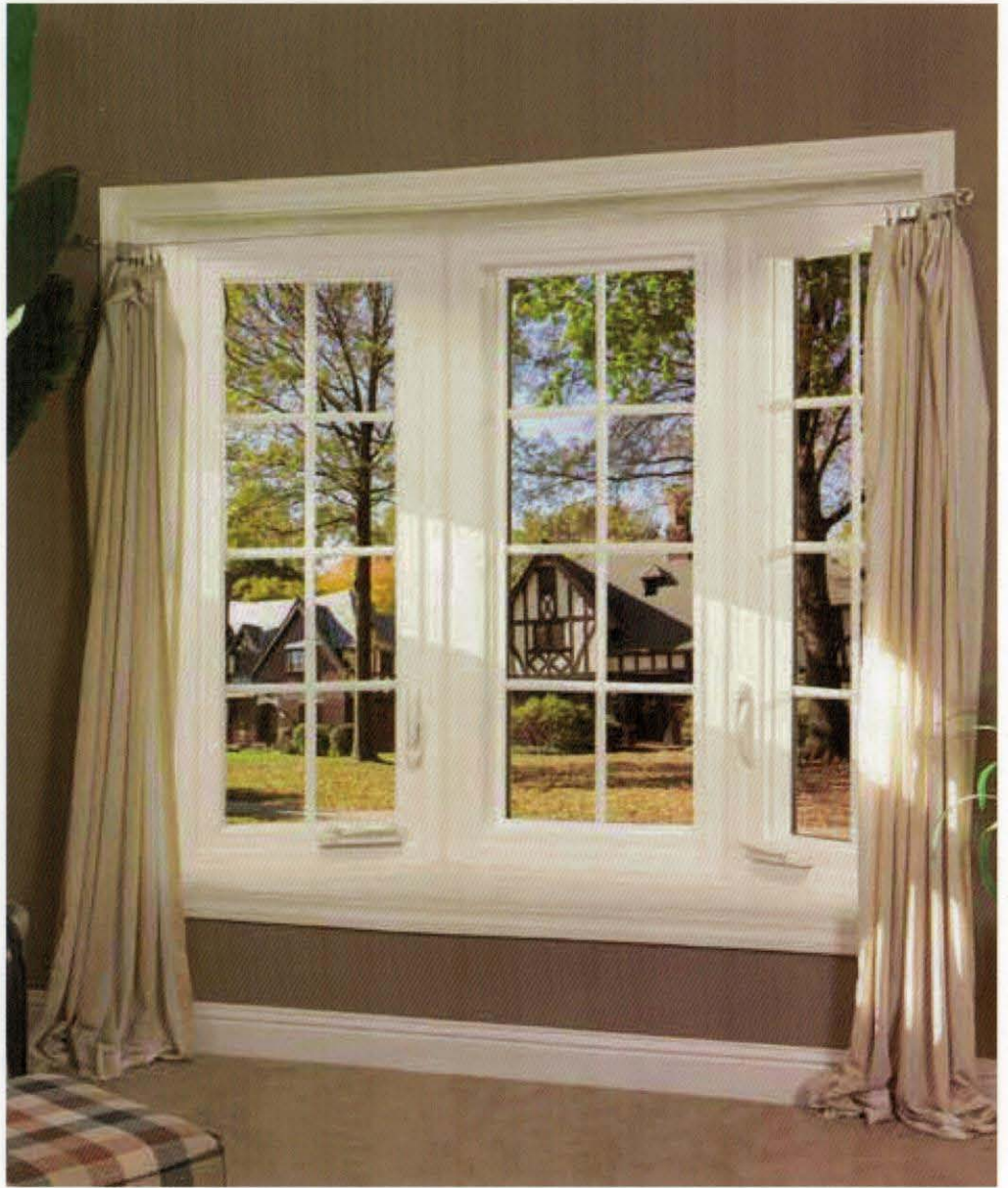
- Head, Jamb and Seat Boards constructed with 1-1/4" externally graded engineered plywood coated with PVC film to protect plywood from outside moisture penetration
- Zinc plated heavy duty brace and rod or cable supporting system, increasing unit rigidity and allowing for easy unit hanging and/or bottom supporting.
- Color matching external finishing profiles
- Color matching internal finishing trims
- Custom sizes
- Real wood internal veneer on plywood elements for natural feel and beauty

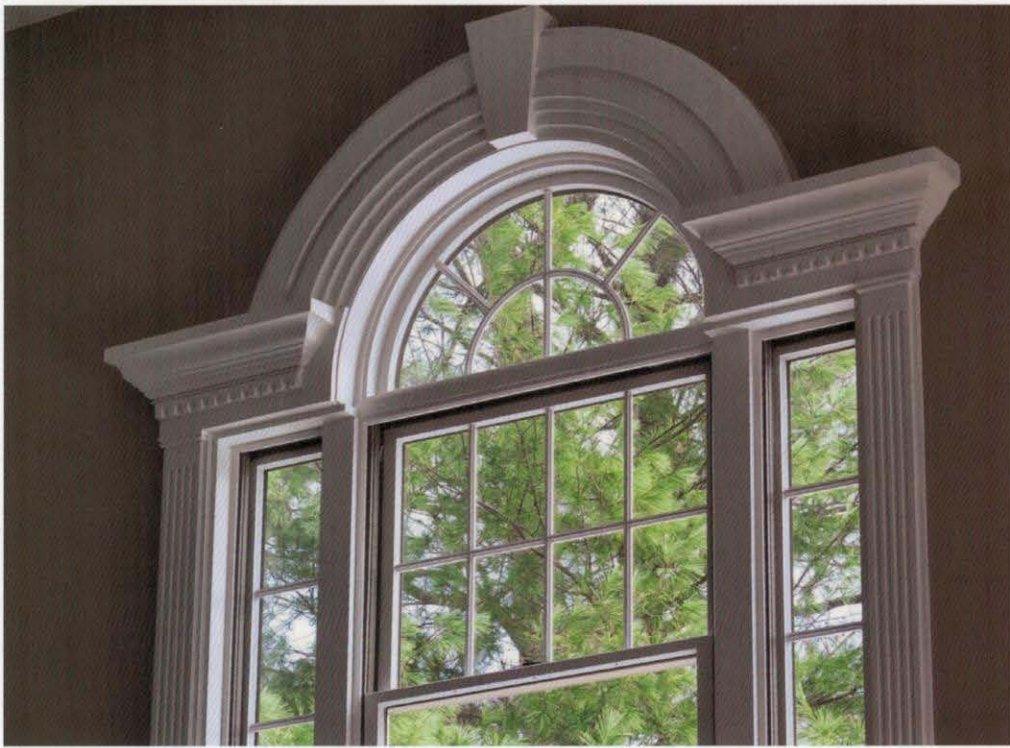
Available Options:

- 3-6 window sections Up to 12' wide
- Solid white or tan colors
- Untreated Natural Oak or Birch veneer as internal plywood finish
- Unlimited color options painted with Eco-friendly water based paints
- Assortment of "Art-Wood" finishes
- 2" high density ridged foam insulation for the seat board with cPVC external finishing trim profile
- Optional Rod or cable supportive system



Additional configurations available





ARCHITECTURAL SHAPES

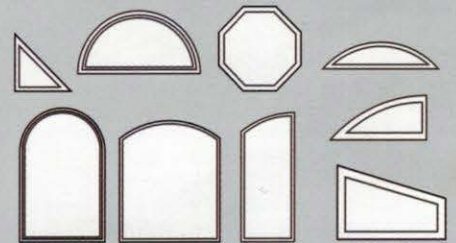
Nothing adds drama like architectural shapes. Non-operating windows like these add light and style while maintaining energy efficiency.

All Architectural Shapes include the following standard features:

- 3-1/4" frame depth with mullion grooves
- High density internal wall design to increase thermal, structural, and acoustical performances
- Excellent strength of fully welded joint connection of frame
- Interior glazing with double or triple glass insulated glass units
- Wide range of different shapes
- Custom sizes
- Connectivity with all 6200 and 6300 series windows

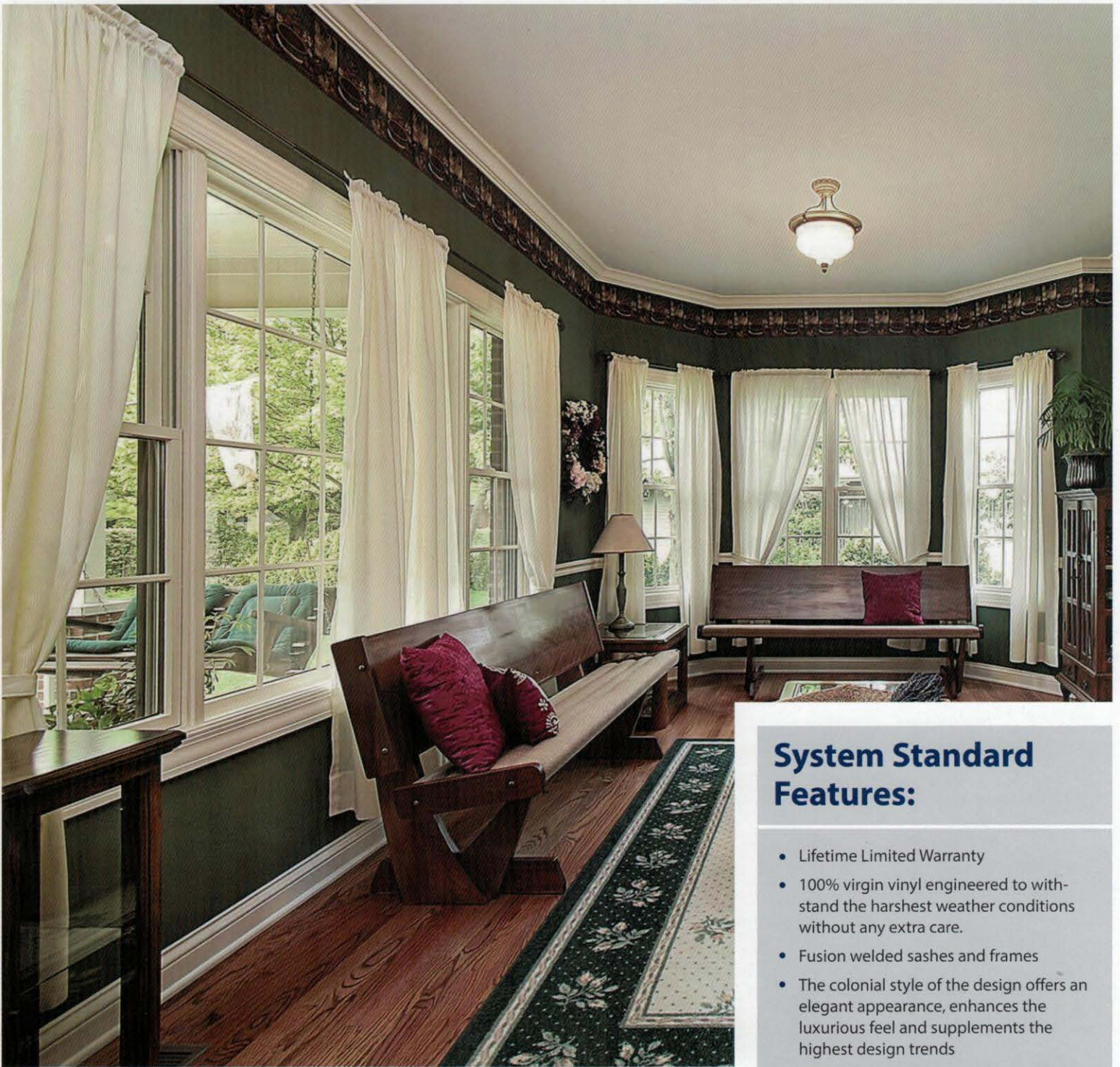
Available Options:

- Solid white or tan colors
- Unlimited color options painted with Eco-friendly water based paints
- Assortment of "Art-Wood" finishes
- Multiple Low-E and gas fill options
- Decorative internal or external grid
- Accessory profiles like: couplers, brick moldings, nail fin



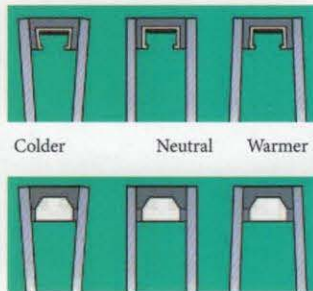
Additional configurations available





System Standard Features:

- Lifetime Limited Warranty
- 100% virgin vinyl engineered to withstand the harshest weather conditions without any extra care.
- Fusion welded sashes and frames
- The colonial style of the design offers an elegant appearance, enhances the luxurious feel and supplements the highest design trends
- Interconnectivity between all products
- Structural joint reinforcement system
- Double or triple glazing
- Solid white or tan colors
- Unlimited color options painted with Eco-friendly water based paints
- Assortment of "Art-Wood" finishes
- Multiple Low-E and gas fill options
- Decorative internal or external grid
- Accessory profiles like: couplers, brick moldings, nail fin
- All products exceed the newest Energy Star requirements



INTERCEPT® Warm Edge Glazing System featuring Super Spacer® offers you reduced heat loss, warmer glass temperature and reduced interior condensation.

Intercept spacers flex instead of the sealant during temperature changes. So they resist spacer movement and sealant failure.

Most of our new windows and doors are glass. That's why we feature the Intercept Warm Edge Glazing System on all of our products.